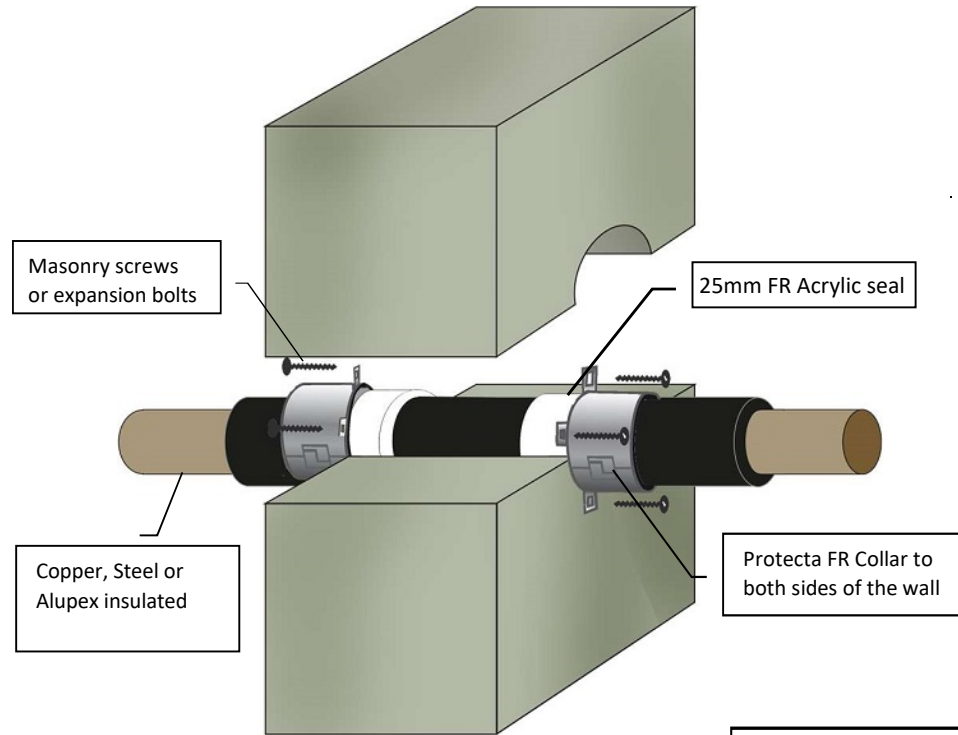


Protecta FR Collar - 100mm Concrete Wall Metal Pipes (Steel, Copper, Alupex) Combustible (Elastomeric, Foam) or Non-combustible Insulation

Installation Instructions

1. For sealing plastic pipes, a pipe collar is installed on both sides of the wall.
2. Before fitting the pipe collar ensure that any gaps between the pipe and the separating element are sealed. Gaps between the pipe and the construction below 8mm must have a bead of Protecta FR Acrylic to cover the opening, and for gaps 8mm or above, the seal must be plugged with FR Acrylic to a depth of 25mm.
3. Place a pipe collar around the service penetration (pipe) and ensure that the fixing lugs are positioned tightly to the surface of the wall so that the anchors/fixings can be inserted fully.
4. Where the surface is uneven, apply a sealing bead of Protecta® FR Acrylic between the wall and the pipe collar.
5. Attach the pipe collar with masonry screws or expansion bolts that are suitable for the substrate that the collar will be fitted to.
6. On sites where the penetration size is greater than the pipe diameter and/or the pipe is on an angle an oversized collar can be used. Protecta® FR Collars are tested 'oversize', i.e. the internal diameter of the collar can be larger than the pipe.



System/FPA Register ID# FC615

Products	Protecta FR Collar Protecta FR Acrylic
Application	Fire stopping of metal pipes with combustible or non-combustible insulation in rigid walls.
Construction	Minimum wall thickness of 100mm and comprise concrete, aerated concrete or masonry, with a density of $\geq 650 \text{ kg/m}^3$

Fire & Sound classification

Copper or mild steel pipes, diameter up to 54mm:

With 9-50mm Elastomeric or non-combustible insulation with 50mm high FR Collar up to 110mm or 60mm high FR Collar up to 160mm
 FRR -/90/60

With 25mm Phenolic Foam or non-combustible insulation with 50mm high FR Collar up to 110mm
 FRR -/120/60

With 20mm PE foam or non-combustible insulation with 50mm high FR Collar up to 110mm
 FRR -/120/90

Alupex pipes, diameter up to 75mm:

With 9-50mm Elastomeric or non-combustible insulation with 50mm high FR Collar up to 110mm or 60mm high FR Collar up to 160mm
 FRR -/90/60

ZERO smoke leakage up to 200Pa with 10mm FR Acrylic

Sound reduction (seal only) STC 58

Sheet size: **A4**
 Drawn date & no: 28/7/20

Scale: **NTS**
 Drawn by: K.B